

Hybrid Urbanism at St Enoch East

Research Question

How can a hybrid building be deployed as an urban design strategy to reconcile historic preservation, public accessibility, and high-density development within the context of the Trongate Parking Lot in Glasgow?

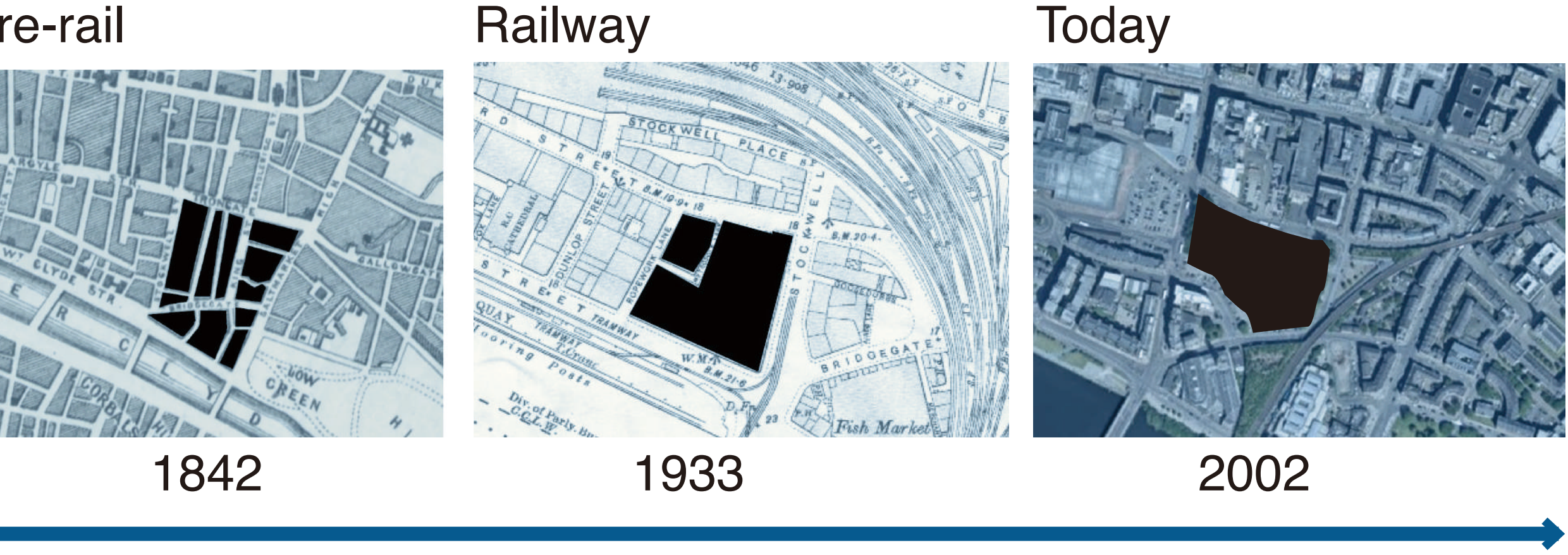
Definition & Academic Roots

Hybrid Building — in architectural and urban design — is not merely the stacking of different functions. It represents two distinct conditions integrated into a single, coherent state, creating spatial, social, and programmatic synergy. The term has historical grounding: from early theoretical discourse in the book Hybrid Buildings to contemporary interpretations by architects such as Steven Holl, it has evolved into a critical design approach for complex urban sites.

Location Analysis



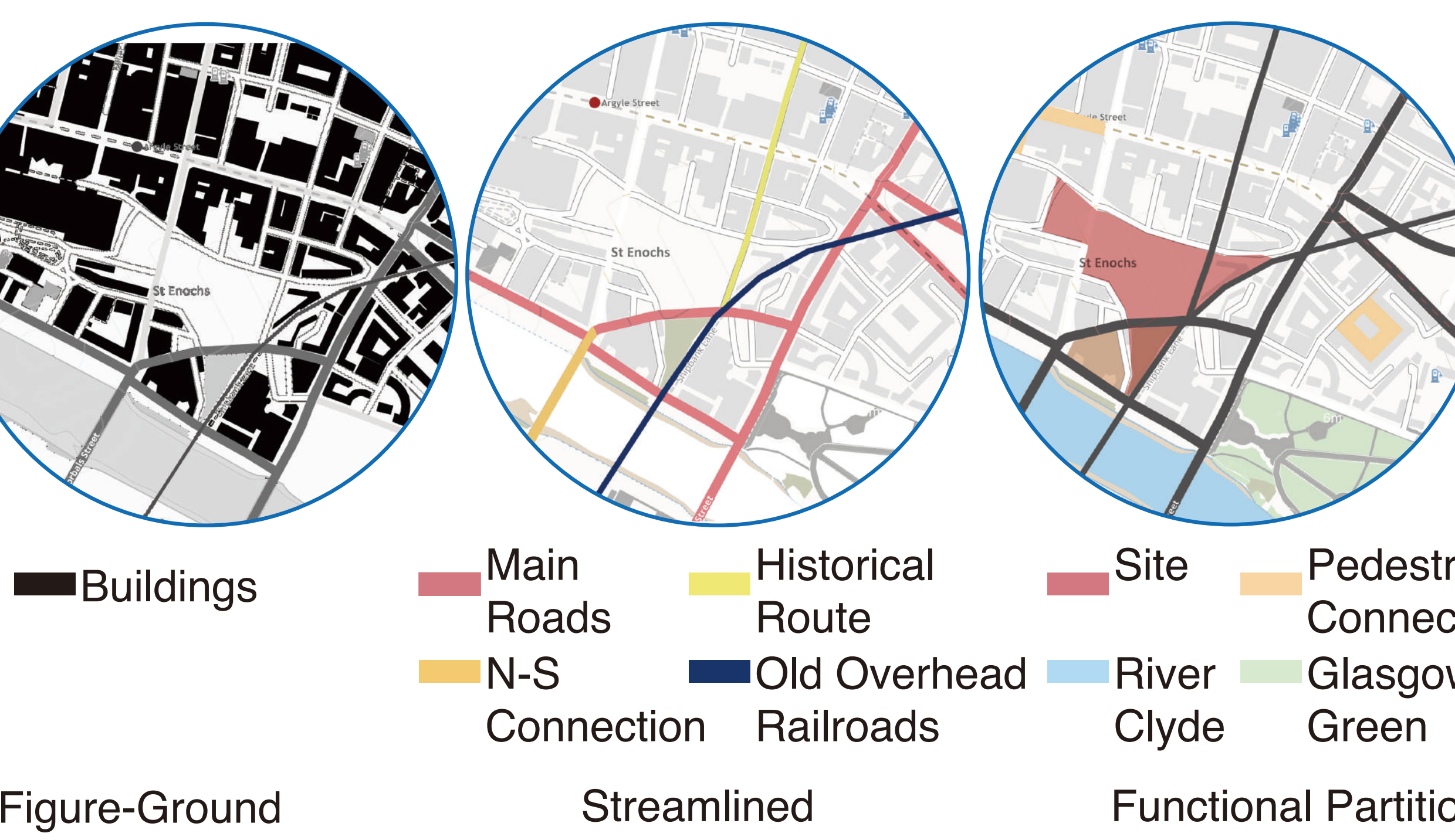
Historical Urban Context Analysis



Historical Photographs



Site Analysis

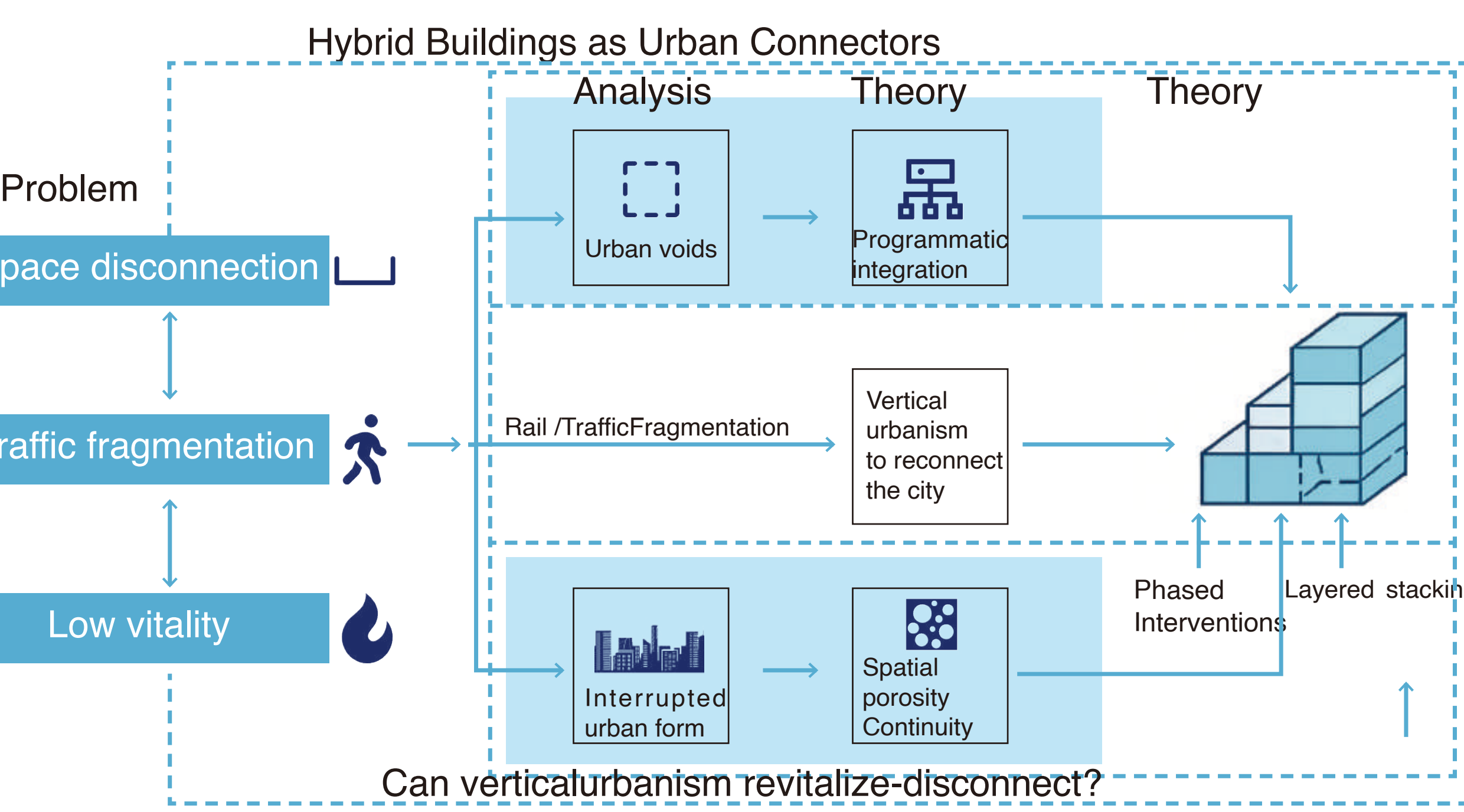


Visual Corridor Analysis

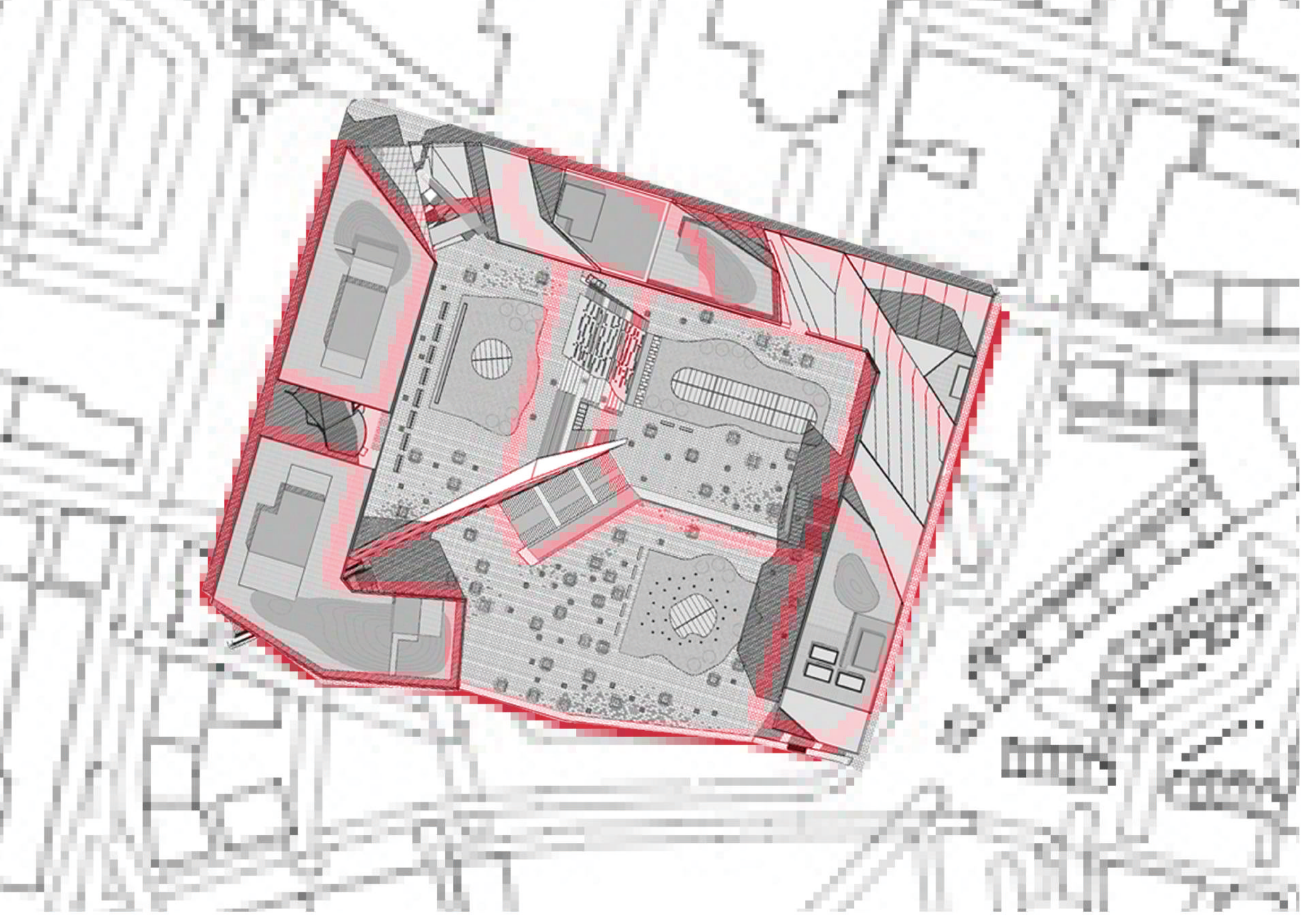


Mercat Tower is framed as a key visual landmark. Major view corridors are aligned to maintain direct sightlines. New buildings are oriented and stepped back to preserve visibility. Visual connections guide pedestrian flow and enhance spatial legibility.

Historical Urban Context Analysis



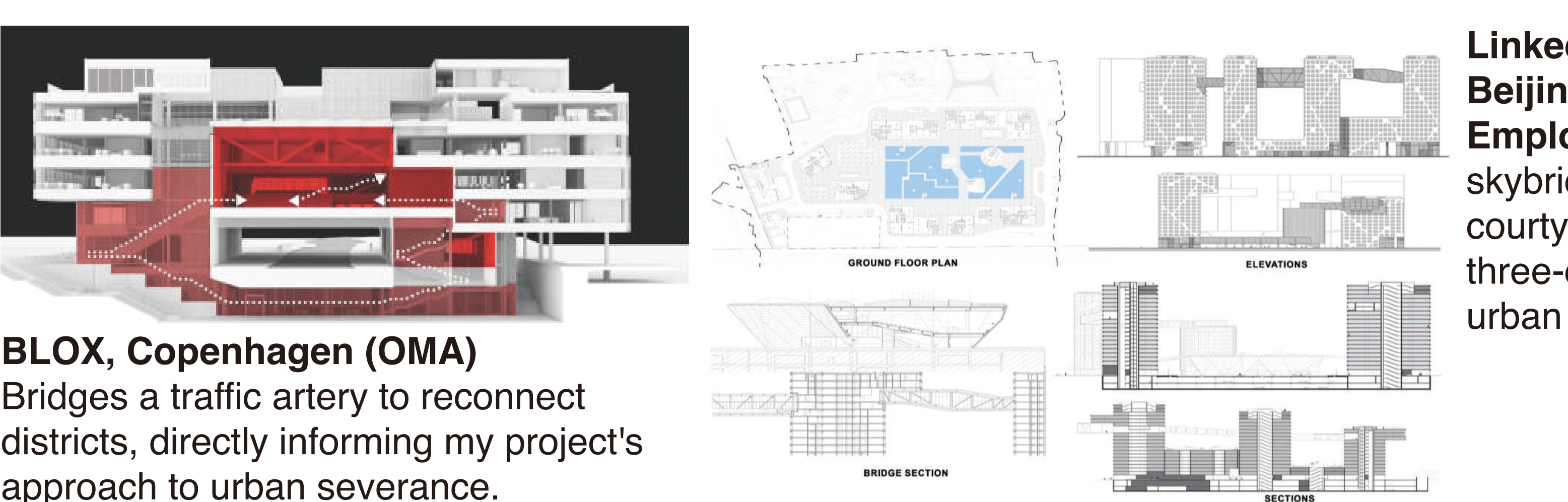
Steven Holl in Glasgow



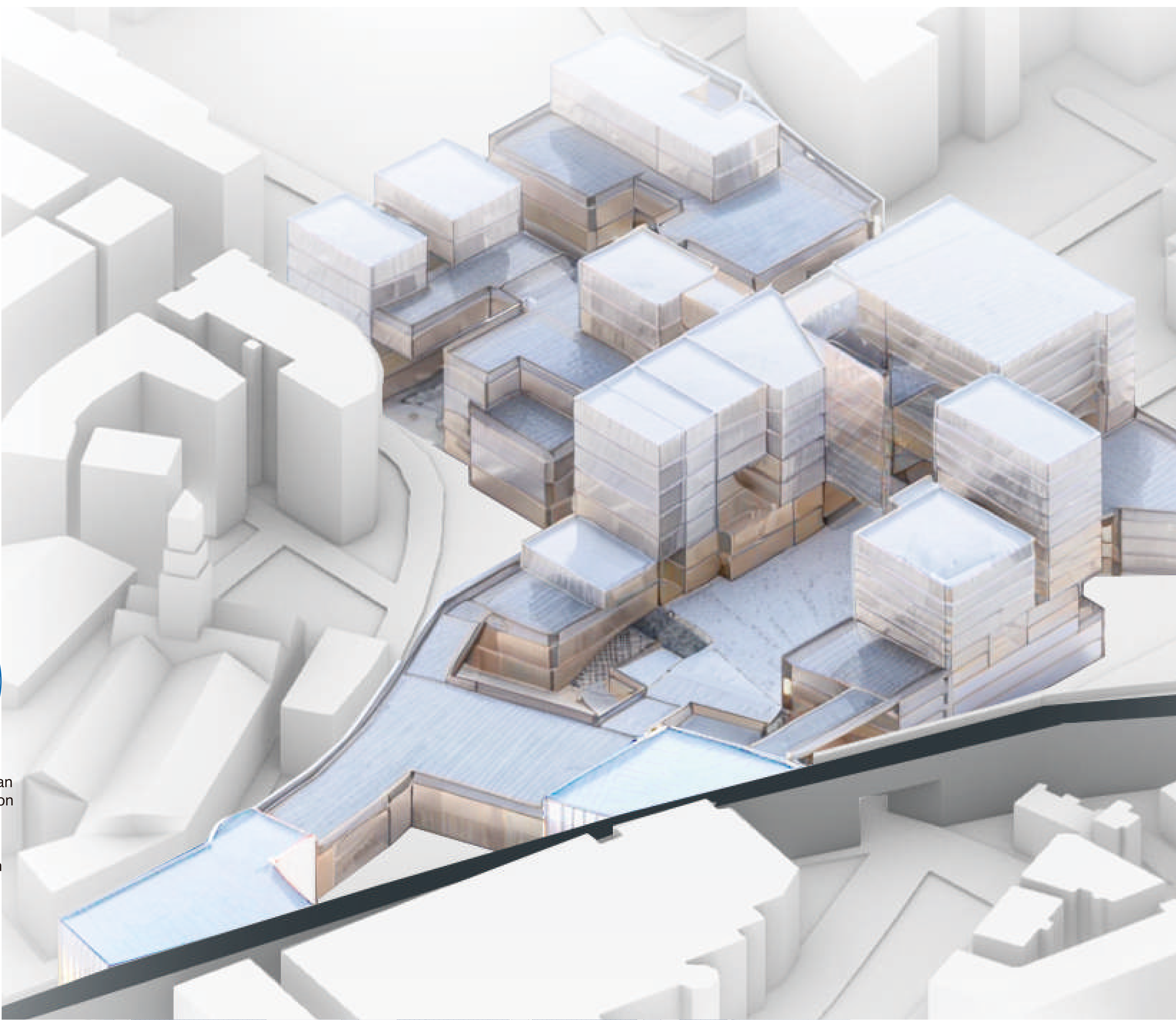
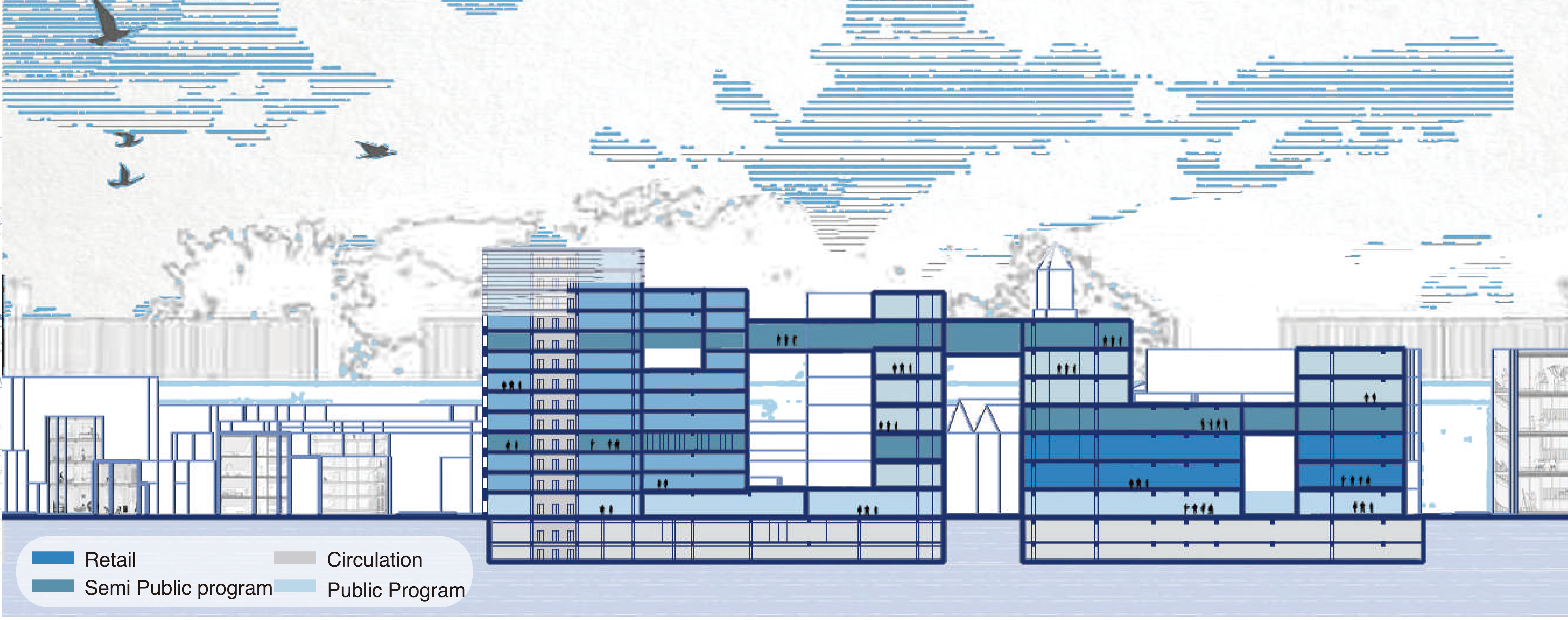
Key Words

- Scale**
A vast, multi-block project scope.
- Functional Integration**
Mixed functions interwoven across levels
- Multi-level Public Space**
Public links create layered spaces
- Hybrid Building**
Beyond mixed-use: integrating functions, scales, and public realms.

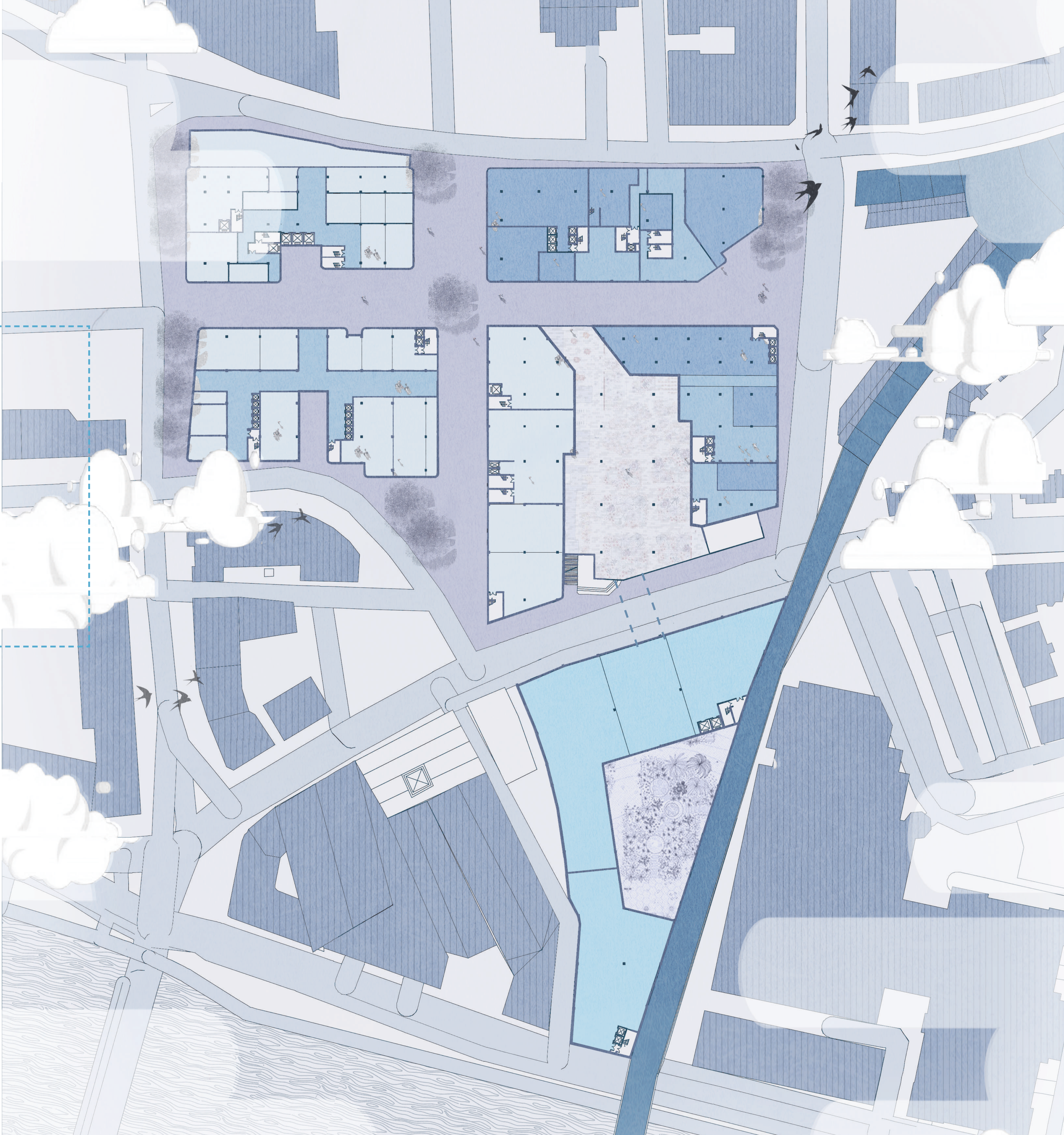
Case Studies



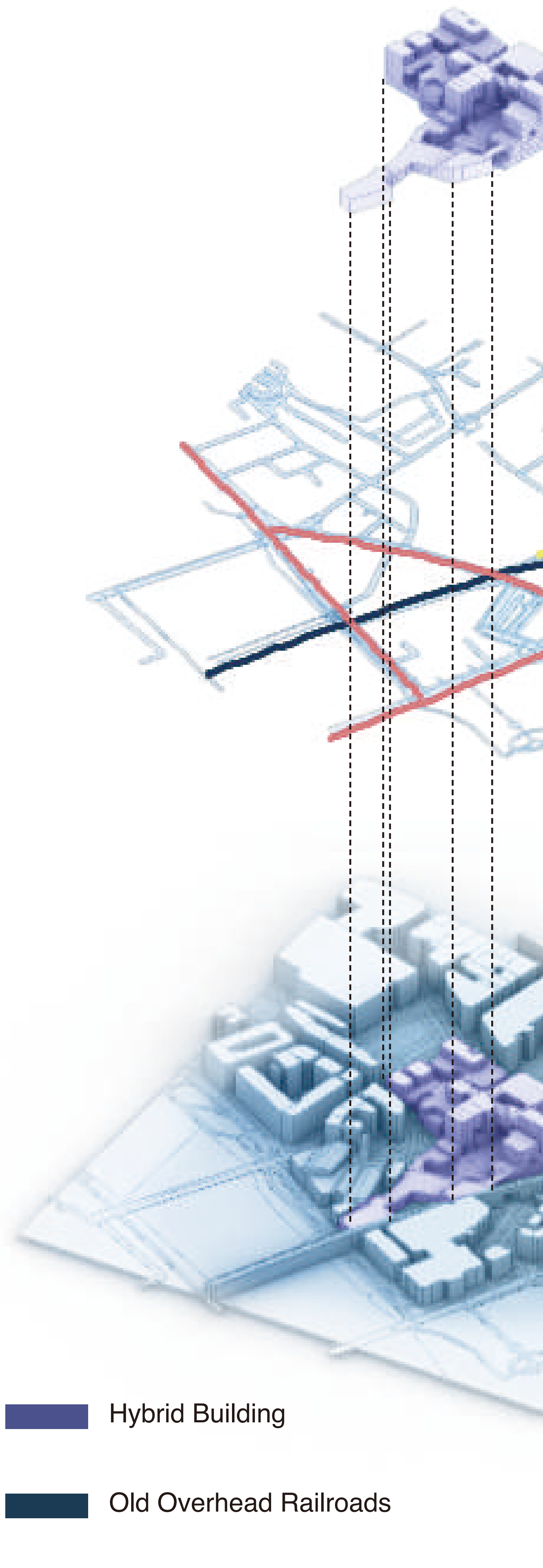
Section A-A'



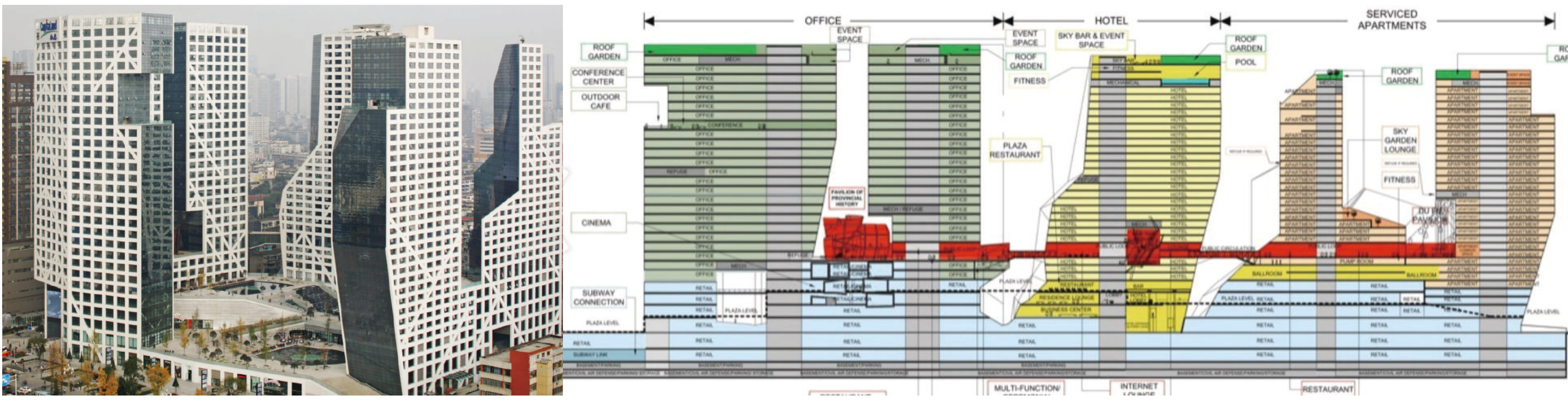
Ground Floor Plan



Explode View



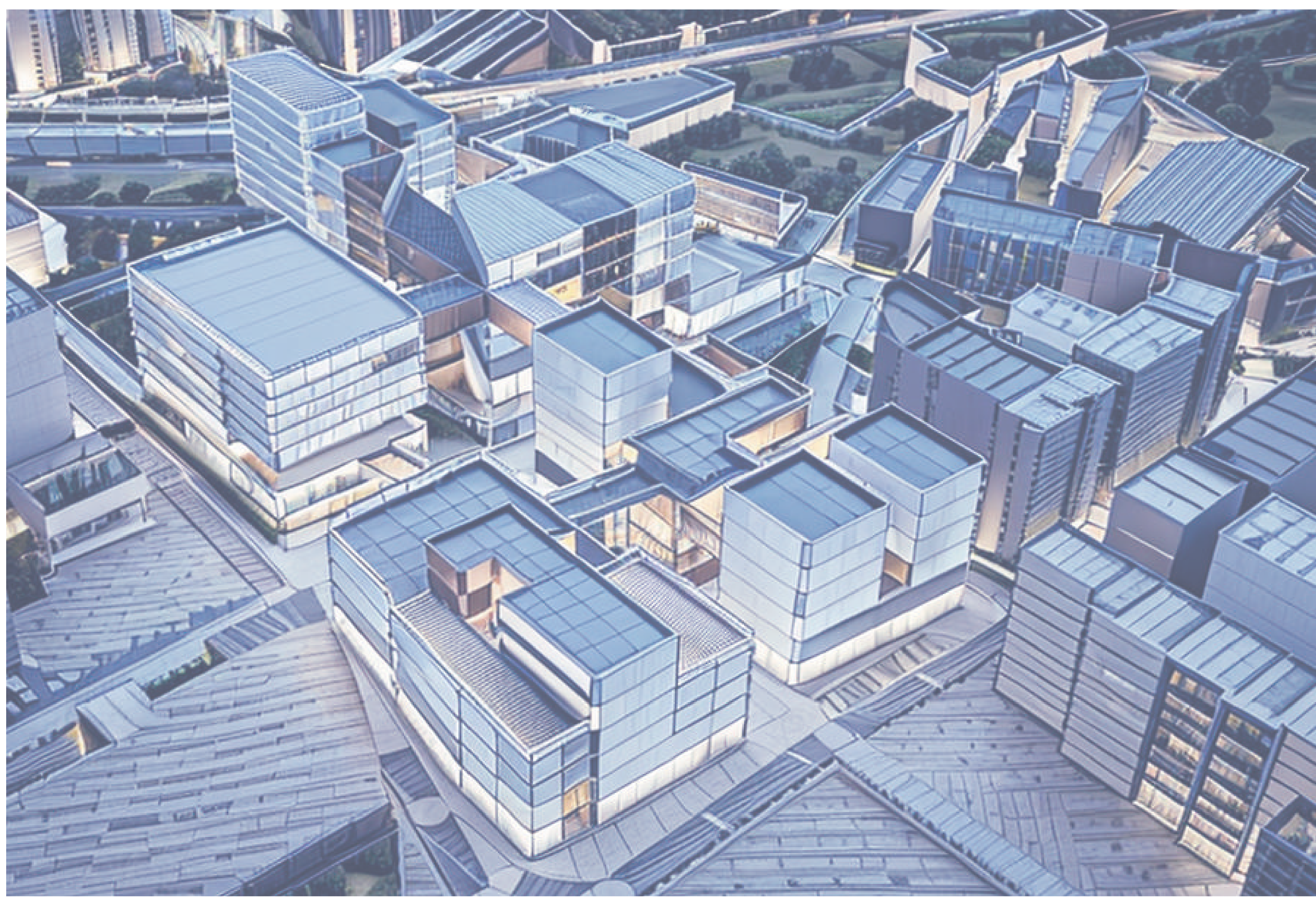
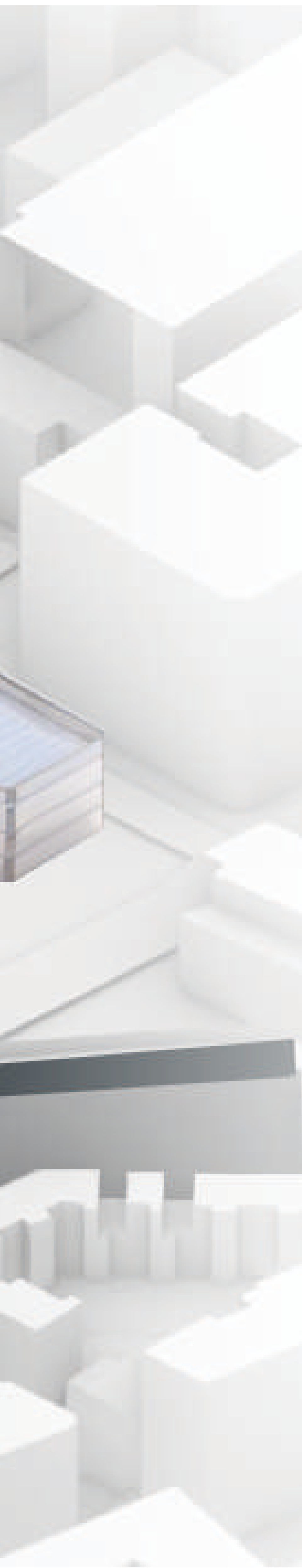
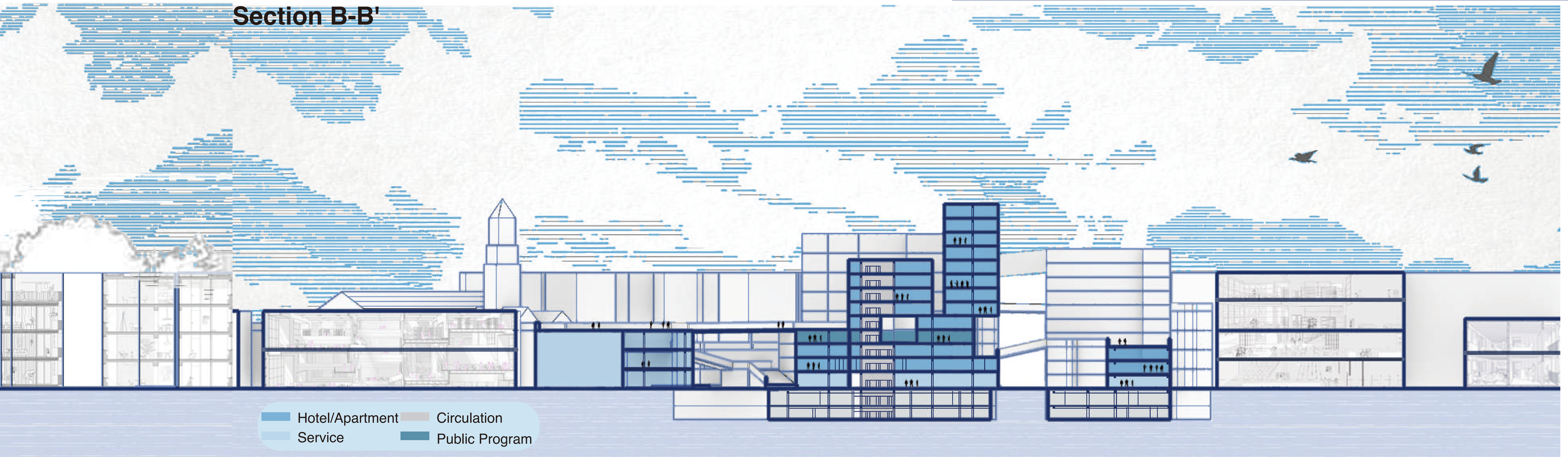
Hybrid, (Holl)
s
es and public
ds to create
ensiona
porosity.



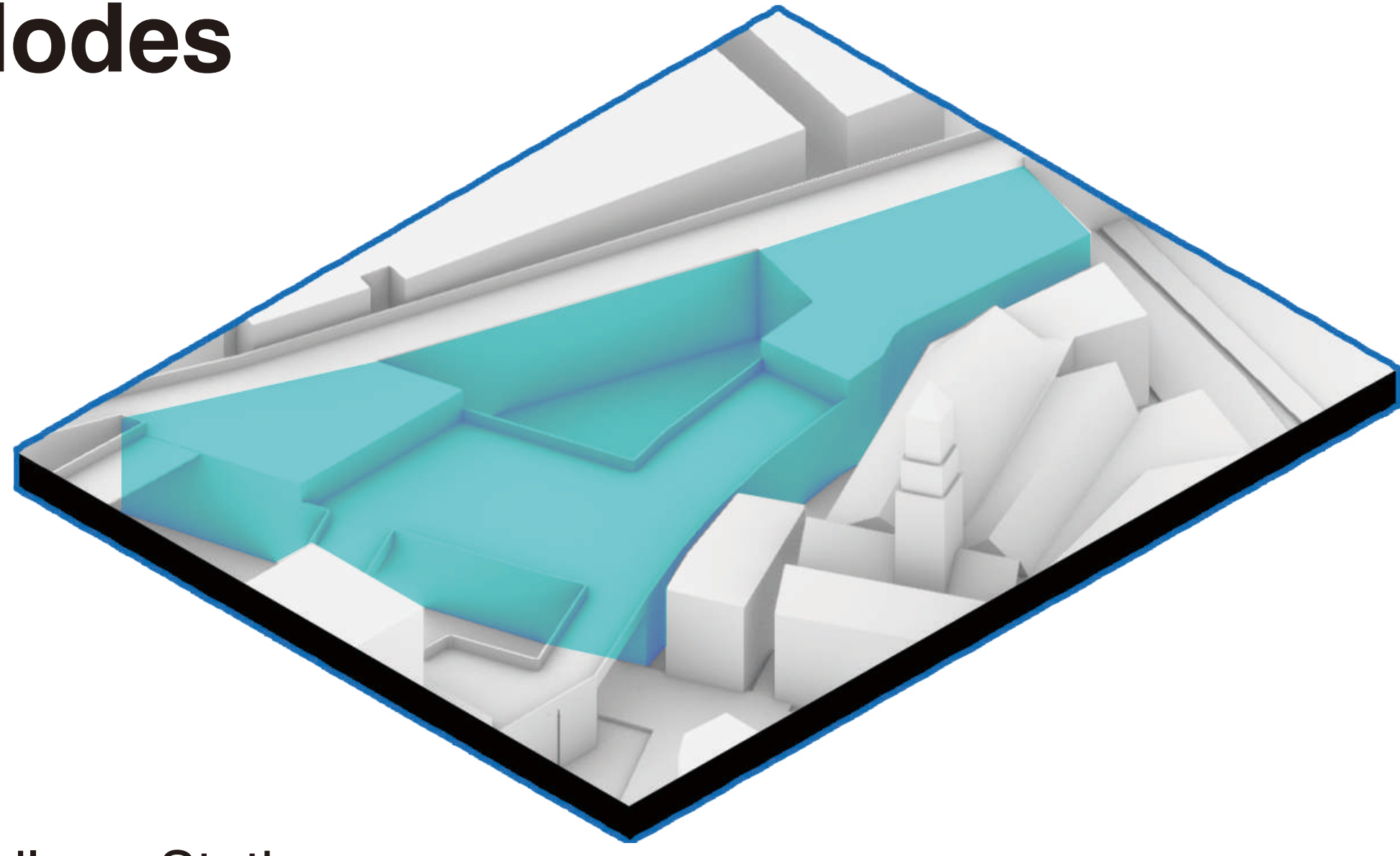
Sliced Porosity Block (Chengdu, 2012, Holl) cuts voids into a dense block, forming plazas, terraces, and skybridges. The hybrid mix of office, hotel, apartments, and retail integrates public space with urban life at multiple levels.

Conclusions

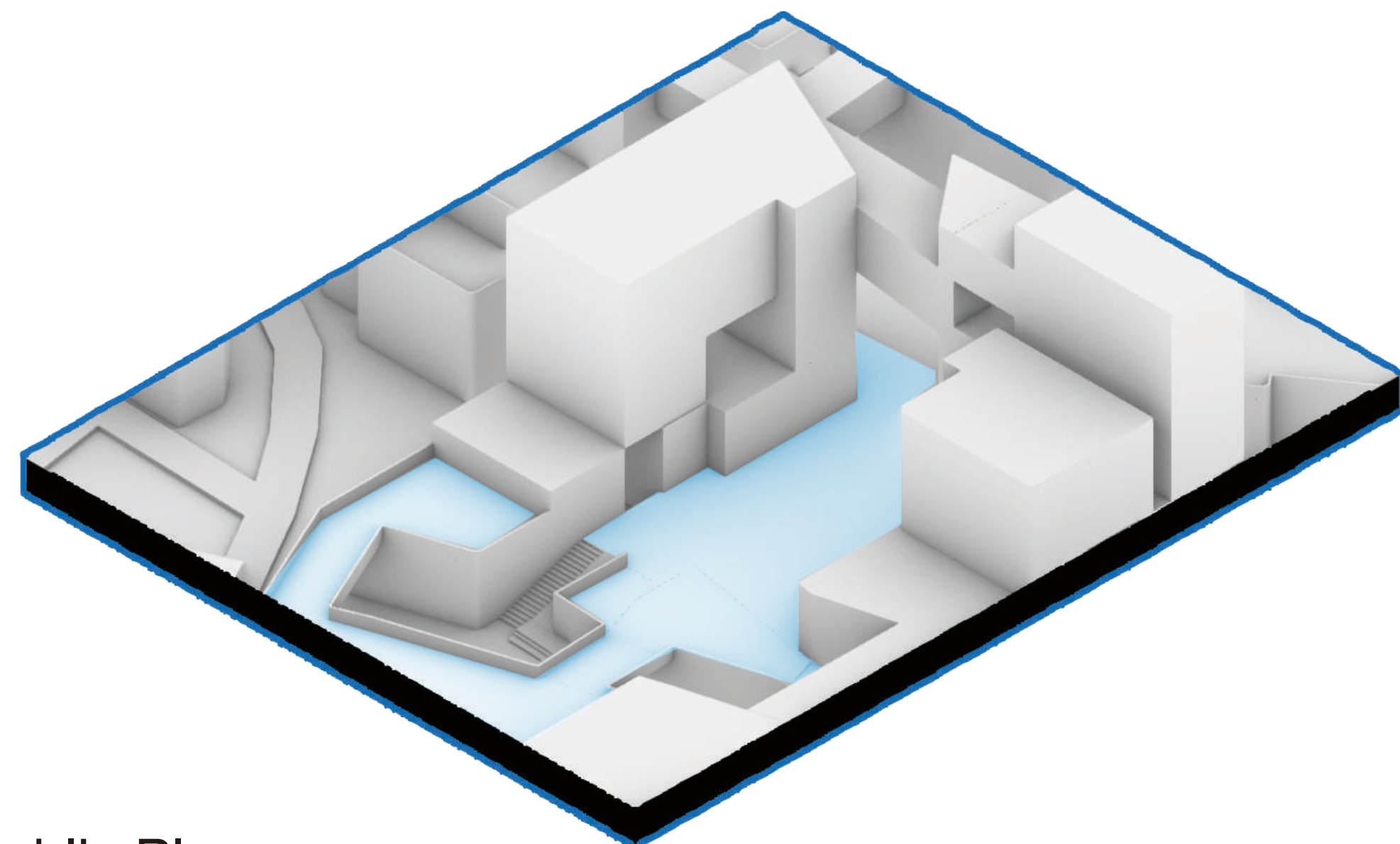
Contextual Mediation
Hybrid buildings negotiate between historic fabric and contemporary density, preserving key views while intensifying use.
Vertical Public Space
Platforms, bridges, and terraces create layered accessibility turning circulation into shared urban life.
Designer-led Hybrid Expression
As Joseph Fenton states in Hybrid Buildings (1985): "Hybrid buildings integrate multiple systems to create efficient, expressive forms." This project, designed as a unified whole by a single designer.



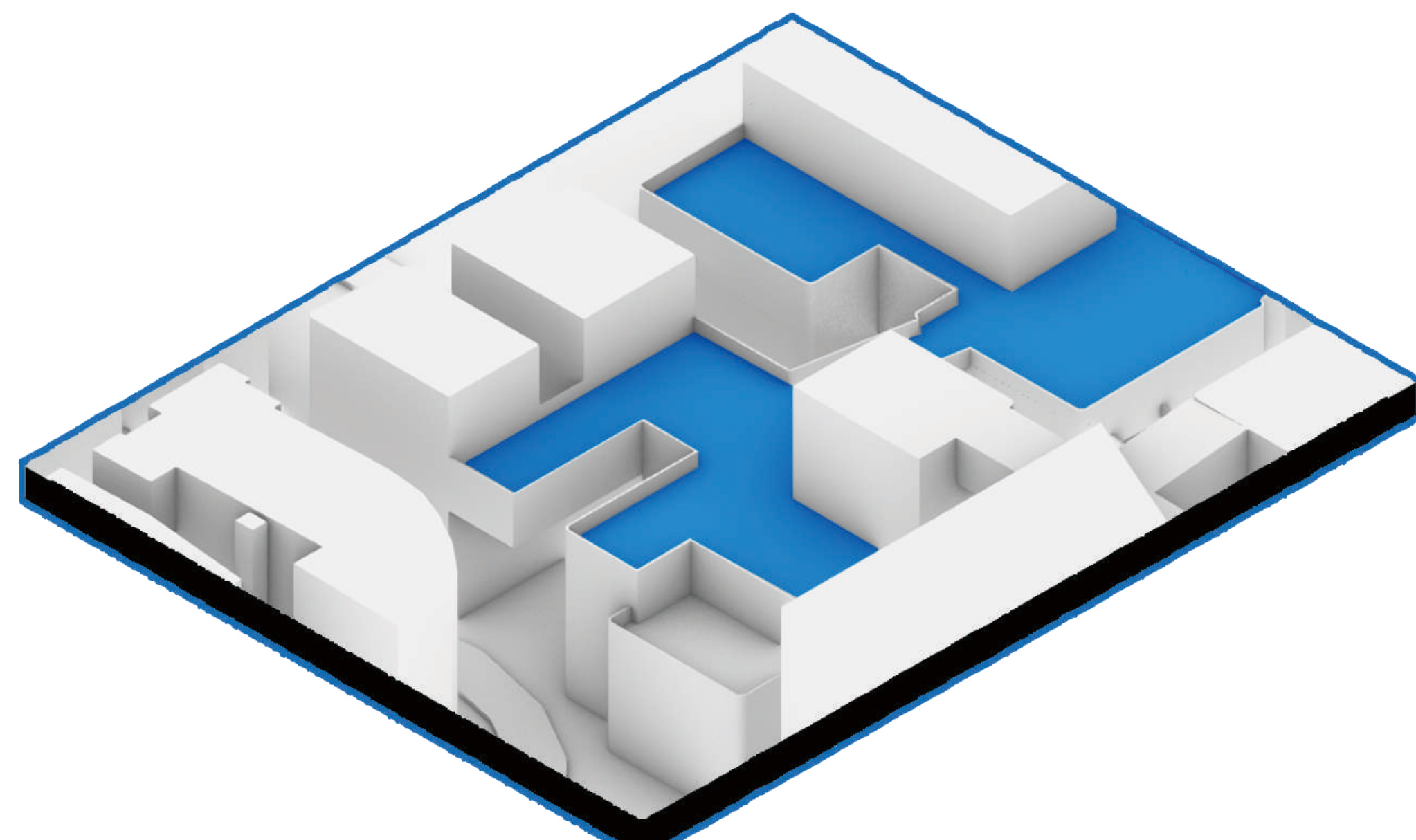
Nodes



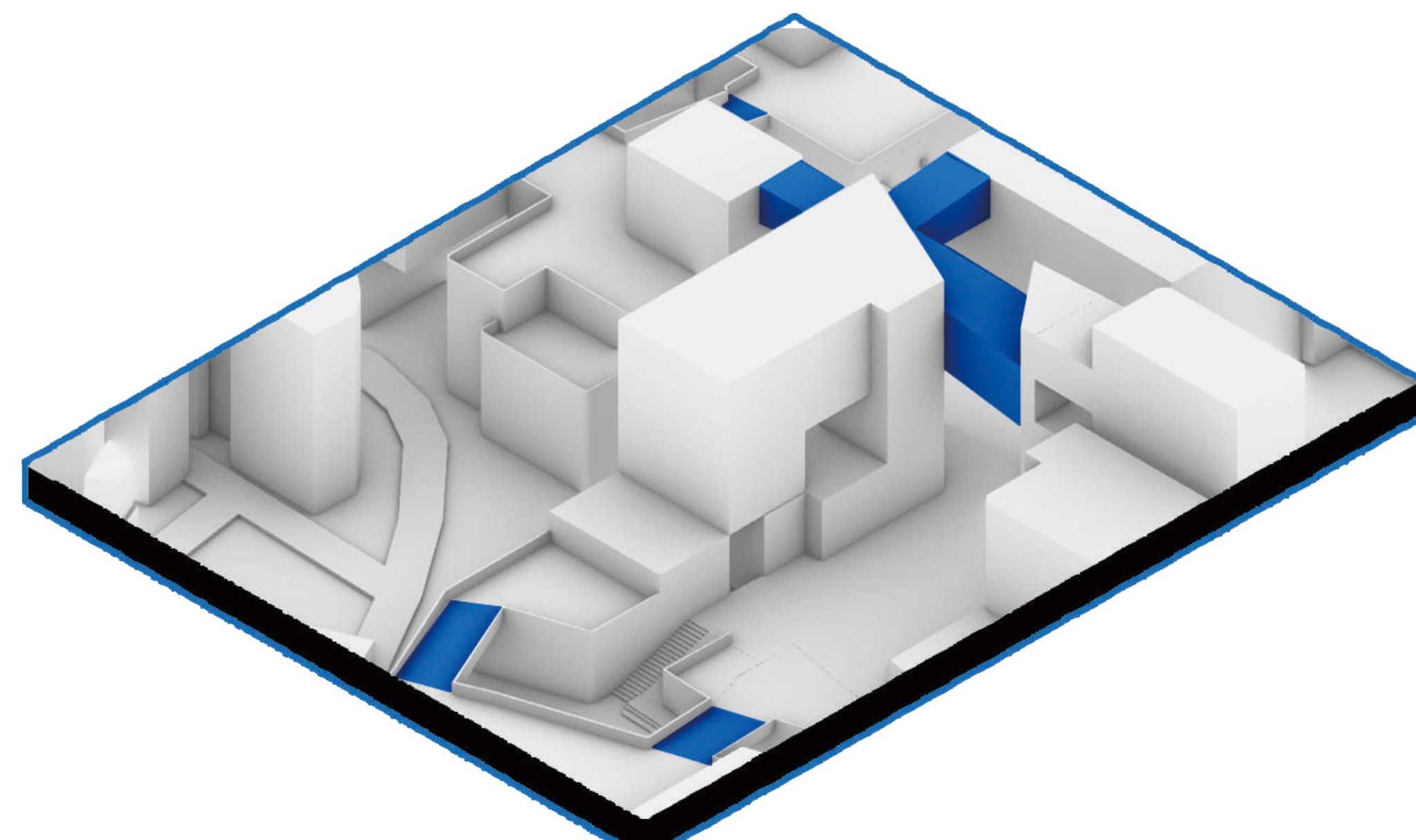
Railway Station
The new station aligns with existing railways, serving as a mobility hub with stepped platforms linking bridges and hybrid spaces.



Public Plaza
This open space extends the plaza south of Bridgegate, linking station platforms and improving pedestrian flow.



Privately-Owned Public Rooftops
Upper terraces serve as semi-public spaces, time-limited by lift access, balancing openness with security



Skybridges Between Hybrid Volumes
Skybridges connect program volumes, enhancing circulation and vertical porosity.

